



Fiber Optical Adapter Standard (Type I)



SC Adapter

Order Information:

Parameter	
Insertion Loss	<0.20dB
Durability	<0.20 dB typical change, 1000 mating
Operating Temperature	-40°C to + 85°C
Housing Color	Beige Blue Green
Housing Material	Plastic Metal
Sleeve Material	Zirconia PB
Channel	Simplex Duplex
Application	SC/PC SC/APC



LC Adapter

Order Information:

Parameter	
Insertion Loss	<0.20dB
Durability	<0.20 dB typical change, 1000 mating
Operating Temperature	-40°C to + 85°C
Housing Shape	Duplex with SC footprint Simplex Duplex
Sleeve Material	Zirconia PB
Application	LC/PC LC/APC



Order Information:

Parameter	
Insertion Loss	<0.20dB
Durability	<0.20 dB typical change, 1000 mating
Operation Temperature	-40°C to + 85°C
Housing Material	Nickel plated brass Plastic
Sleeve Material	Zirconia PB
Channel	Simplex Duplex

www.hy-fiber.com

www.hy-fiber.com



ST Adapter



Order Information:

Parameter	
Insertion Loss	<0.20dB
Durability	<0.20 dB typical change, 1000 mating
Operating Temperature	-40°C to + 85°C
Housing Shape	Square Round (D-shape) Diamond
Housing Composition	One-piece Two-piece
Sleeve Material	Zirconia PB
Application	FC/PC FC/APC
Channel	Simplex Duplex
D-shape	Big D type Small d type

www.hy-fiber.com

FC Adapter



MU Adapter

DIN Adapter

E2000 Adapter



MPO Adapter

MTRJ Adapter

Order Information:

Description	Parameter
Insertion Loss	<0.20dB
Durability	<0.20 dB typical change, 1000 matings
Operating Temperature	-40°C to + 75°C
Sleeve Material	Zirconia PB
Channel	Simplex

www.hy-fiber.com



Fiber Optical Adapter with Shutter (Type II)



LC without Flange



LC with Flange



SC without Flange



SC with Flange



SC with Flange



SC with Flange

Order Information:

Optical Performance	Ceramic	Conformance
Insertion Loss	0.20dB	IEC 61300-3-4
Mating Durability	500	IEC61300-2-2
Receptacle Retention force	1N - 2.5N	IEC 61754-4
Drop test	Drop height 1m, 5 drops	IEC 61300-2-12
Operating Temperature	-25°C to +70°C,12 cycles	IEC 61300-2-22

SC Type Swing Shutter Adapter(Type III)



SC/SM



SC/MM



SC/APC

Order Information:

Optical Performance	Ceramic	Conformance
Insertion Loss	0.20dB	IEC 61300-3-4
Mating Durability	500	IEC61300-2-2
Receptacle Retention force	1N - 2.5N	IEC 61754-4
Drop test	Drop height 1m, 5 drops	IEC 61300-2-12
Operating Temperature	-25°C to +70°C,12 cycles	IEC 61300-2-22

www.hy-fiber.com

www.hy-fiber.com



LC TOP Adapter with SC Foot Print—True One Piece (Type IV)



LC with Flange



LC without Flange



LC with Flange



LC without Flange

Order Information:

Optical Performance	Ceramic	Conformance
Insertion Loss	0.20dB	IEC 61300-3-4
Mating Durability	500	IEC61300-2-2
Receptacle Retention force	1N - 2.5N	IEC 61754-4
Drop test	Drop height 1m, 5 drops	IEC 61300-2-12
Operating Temperature	-25°C to + 70°C, 12 cycles	IEC 61300-2-22

SC Type Shutter Adapter (Type V & VI)



SC/APC (Type V)



SC/APC (Type V & VI)

Order Information:

Optical Performance	Ceramic	Conformance
Insertion Loss	0.20dB	IEC 61300-3-4
Mating Durability	500	IEC61300-2-2
Receptacle Retention force	1N - 2.5N	IEC 61754-4
Drop test	Drop height 1m, 5 drops	IEC 61300-2-12
Operating Temperature	-25°C to + 70°C, 12 cycles	IEC 61300-2-22

www.hy-fiber.com

www.hy-fiber.com



Fiber Optical Hybrid Adapter

www.hy-fiber.com



ST-LC (male-female)



FC-LC (male-female)



ST-FC (male-female)



ST-SC (male-female)



LC-SC (male-female)



FC-SC (male-female)



LC-ST (male-female)



LC-FC (male-female)



FC-ST (male-female)



SC-LC (male-female)



SC-ST (male-female)



SC-FC (male-female)

www.hy-fiber.com

Order Information:

Optical Performance	Ceramic	Conformance
Insertion Loss	0.20dB	IEC 61300-3-4
Mating Durability	500	IEC61300-2-2
Receptacle Retention force	1N - 2.5N	IEC 61754-4
Drop test	Drop height 1m, 5 drops	IEC 61300-2-12
Operating Temperature	-25°C to + 70°C,12 cycles	IEC 61300-2-22



Bare Fiber Adapter



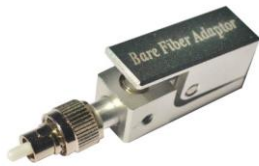
SC Type



SC Type



LC Type



FC Type



FC Type



ST Type

MU Fiber Optical Adaptor



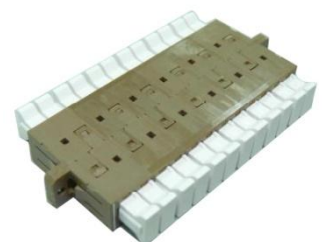
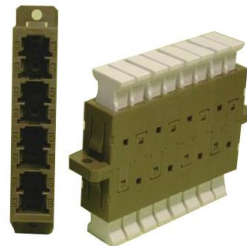
MU Simplex Adapter(Flangeless)



MU Duplex Adapter(Flanged)



MU Duplex Adapter with SC footprint(Flanged)



MU Adapter with SC footprint (Flanged), Multiple Ports: from 4-port to endless

Order Information:

Optical Performance	Ceramic	Conformance
Insertion Loss	0.20dB	IEC 61300-3-4
Mating Durability	500	IEC61300-2-2
Receptacle Retention force	1N - 2.5N	IEC 61754-20
Operating Temperature	-25°C to + 70°C,12 cycles	IEC 61300-2-22

www.hy-fiber.com

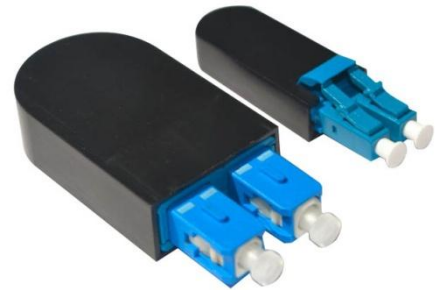
www.hy-fiber.com



Fiber Optical Loopback Adapter

Description

Loopback fiber adapter/patch cord (Loopback fiber cable) provides a media of return path for a signal, whether the signal is for testing purposes or due to network restoration. Loopback fiber adapter (patch cord) can be regarded to be the two connectors on the same piece of simplex fiber optic patch cable put together, thus it forms a loop. In the case of testing, the loopback signal is used for diagnosing a problem. Sending a loopback test to network equipment, one at a time, is a technique for isolating a problem. Its performance is as good as that of a general adapter (patch cord).



The two most commonly used loopback fiber adapter (patch cord) are SC and LC fiber connector type, just like patch cord assemblies, loopback fiber adapter (patch cord) are classified by single mode type and multimode type. Typically single mode SC and LC type loopback fiber adapter are blue color, typical multimode SC and LC type loopback fiber adapter are beige color, and this also goes with the practice of fiber adapter. Loopback fiber adapter can be 9/125 single mode or 50/125 multimode, or 62.5/125 multimode.

Application:

- ◆ Optical CATV
- ◆ Optical fiber communication system
- ◆ Optical fiber test equipment
- ◆ Active device termination
- ◆ Data processing network

Feature:

- ◆ For equipment self-testing
- ◆ Molded connector to secure connection
- ◆ Operating Wavelength: 850 nm (Multimode), 1310nm (Singlemode)
- ◆ Fully tested cable to ensure high quality and durability
- ◆ It is compliant to Telcordia, EIA/TIA and IEC standards.

Order Information:

Optical Performance	Ceramic	Conformance
Insertion Loss	0.70dB	IEC 61300-3-4
Mating Durability	500	IEC61300-2-2
Receptacle Retention force	1N - 2.5N	IEC 61754-4
Drop test	Drop height 1m, 5 drops	IEC 61300-2-12
Operating Temperature	-25°C to + 70°C,12 cycles	IEC 61300-2-22

www.hy-fiber.com

www.hy-fiber.com